

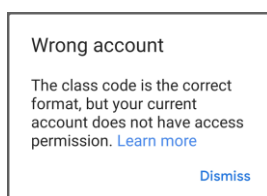


Downloading Apps

- › iOS for Apple Mobile Devices:
 - <https://apps.apple.com/gb/app/google-classroom/id924620788>
- › Android:
 - https://play.google.com/store/apps/details?id=com.google.android.apps.classroom&hl=en_GB&gl=US
- › For all other devices, use a browser and go to:
 - <https://classroom.google.com>

Android Errors

On Android phones you may get an error such as the one below;



This is because the system automatically uses your own account details.

If this is the case you will need to add your child's login details to your device. To do this follow this process;

- › Settings -> Accounts. Then <https://www.androidcentral.com/how-add-second-google-account-your-android>
- › If a 'work profile' is created you will need to delete the account and add it again – this is because it will prevent multiple children's accounts being added to a single device and may cause future issues.

I-Phone (iOS) Errors

- › On iOS you do not need to add the account first. You can download the app, tap into the app and sign in.
- If you already have a GSuite account on your iPad, with classroom access, it may be necessary to tap your existing account icon, tap 'add another account', and then add the new account there first.

Google Classroom FAQs

Username or Password Errors

- › If your child's username or password does not work, please ask your child to check with their class teacher that the details they have are correct, or email the school office for confirmation office@livingstoneprimary.org
- › Below are the details of class codes, these will enable your child to collaborate with another child in a different class (these collaborations will be monitored).

Class	Code	Class	Code
Blossom	ycgcnsnp	Larch	vcadjb8
Cedar	3pxtp2k	Lime	wexi4yj
Cherry	mi7pcsz	Mangrove	pfmdddv
Chestnut	pmyj3cn	Maple	u4tsp3u
Fir	ujnftg4	Mulberry	xqe2pkw
Hazel	4lttct4	Yew	o3sy36h
Holly	cz64evx	Silver Birch	ocsb7dm
Willow	lzrfjov	Sycamore	rdggkr4
Pine	tmi7g6w	Oak	du2k5nq

How to Hand in Work (mobile devices – Android or iOS)

- › Open the Google Classroom app
- › Tap on their class, then tap 'Classwork' (at the bottom)
- › Tap on an assignment, then tap the arrow at the bottom
- › Tap 'Add attachment'. Follow their teacher's instructions on how to complete the work
- › Once the work is finished, tap 'Hand in', then tap 'Hand in' again to confirm

Made a mistake? Tap 'Unsubmit' to return the work, then follow the last two steps to resubmit it.

Required Apps (Android & iOS)



› Classroom



› Docs



› Drive



› Jamboard



› Keep



› Meet



› Sheets



› Slides

- › On some devices it is also necessary to install the Gmail App to access Meet even though the school does not use Gmail for Students



Computers and Laptops

- › Go to www.classroom.google.com
- › Log in to their Google Classroom account
- › Click the '+' icon (in the top-right corner), click 'Join class'
- › Enter the class code above, click 'Join'

How to Hand in Work (Computers and Laptops)

- › Go to Google Classroom www.classroom.google.com
- › Click 'Classwork'
- › Click on an assignment, then click 'View assignment'
- › On the right-hand side of the page, click 'Add or create'. Follow their teacher's instructions on how to complete the work
- › Once the work is finished, click 'Hand in', then 'Hand in' again to confirm

Made a mistake? Click 'Unsubmit' to return the work, then follow the last two steps to resubmit it.